

**GENERAL**

Year Built	2011
Flag	Denmark
Port of registry	Horsens
Call Sign	OZTU2
IMO Number	9578244
MMSI	219370000
Class	* 100 A5 ERS DP 2 DG Self-elevating Unit SPS, Operating according to Operating Manual MC AUT EP-D
Number of legs	4
Endurance	21 Days
Helideck	Octagonal with 16.66 diameter (rated @6.4t)

PRINCIPAL DIMENSIONS

Length Overall	Moulded 100.00m Extreme 162.00m (Helideck & Crane Long Boom)
Lightship	13,006t (incl.2,848t legs excl 572t spudcans and with Short Boom configuration)
Beam Moulded	40.20m
Depth Moulded	8.00m
Draft	4.70m (Excl.spudcans and with thrusters retracted)

CARGO CAPACITY

Deadweight	6,315t
Cargo Area	2,850m ²
Deck Strength	15.00t/m ² with strong points

OPERATING CONDITIONS & PERFORMANCE

Service	Transit Limited to 6.50 Hs (Empty Ship)
Maximum Operating Depth*	45.00m
Operating Draft	4.70m (Excl.spudcans and with thrusters retracted) 7.70m (incl.Spudcans and with thrusters deployed)
Air Draft	79.65m @4.70m Draft (Excl.Spudcans)
Crane Operations	25.00m/s Wind Speed
Transit Speed	7.50 knots (Excl.Spudcans) 6.50 knots (Incl.Spudcans)
Fuel Consumption	Approx.1.875t/h at transit speed propulsion

JACKING SYSTEM & PERFORMANCE

Effective leg length below hull	53.46m (Incl.Spudcans)
Effective leg length below hull	52.86m (Incl.Spudcans)
System Supplier	Muns Technik B.V.
Lifting Speed	0.70m per minute
Jacking Capacity	4,943t/Leg
Pre-drive Capacity	6,750t/Leg
Holding Capacity	10,713t/Leg

JACKING OPERATIONS (ALL CONCURRENT)

Maximum Wave Height	3.70m Hmax (@ 0 deg and 45 deg) 2.00m Hs (@ 0 deg and 45 deg)
Associated Period	8.00s
Wind speed	15.00m/s
Current speed (Tidal & Wind)	1.20m/s

JACKED SURVIVAL (ALL CONCURRENT)

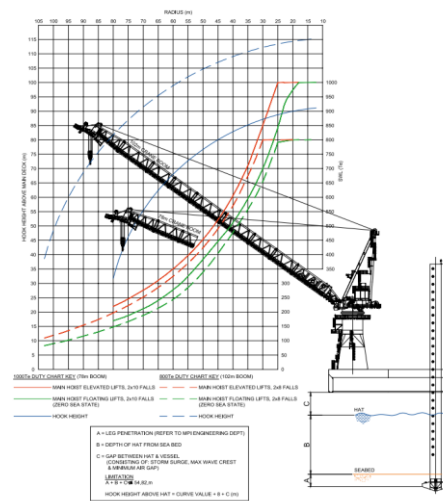
Maximum Wave Height	Subject to Site Specific Assessment 10.00Hmax 5.40m Hs
Associated Period	7.00-10.00s
Wind speed	25.00m/s
Current speed (Tidal & Wind)	1.30m/s

DYNAMIC POSITIONING SYSTEM : DP2

DP Class	Class 2
Positioning Ref.	2 x DGPS (GPS Nav, GPS Compass)
Local Positioning Reference	CYSCAN
MRU	MRU1,MRU2
HPR	
Gyro Compass	GYRO1,GYRO2, SAT Compass
Environmental Sensors	WIND1,WIND2
DP2 setup	Dual Operator Station with dual controller
Joystick	Independent with 3 remotes

CRANE LIFTING EQUIPMENT

Main Crane	Liebherr BOS 3500-800/3500-1000 Litronic
Main hoist, short boom	1,000t @ 25.00m, min Radius 12.20m
Main hoist, long boom	800t @25.00m, min Radius 13.90m
Aux hoist	50t @ All Radii

**AUXILIARY CRANE**

Maker	HMB Lintech Marine
Type : Knuckle Boom Telescopic Crane	6.00t @ 15m 2.80t @ 24m
Man riding	Up to 2.00m Hs
On board lift	0.70t@24.00m Radius
Off board lift	0.70t@15.00m Radius

ACCOMMODATION / OFFICES / FACILITIES

Berths	60
Double Cabins	12
Single Cabins	36
Other facilities	Client Office Meeting Room Heli Lounge and TV & Video Room Conference Room 2 x Gymsnasiums Recreation/Reading Room

This technical specification sheet is subject to change without notice. Whilst every effort has been made to ensure the accuracy of the information presented. No guarantees of accuracy can be given. For enquiries, kindly email us at chartering@nl.vroonoffshore.com.