



Leaders in Safety



Livestock Express * E chartering@livestock-express.com * W www.livestock-express.com

Livestock Vessel Holstein Express

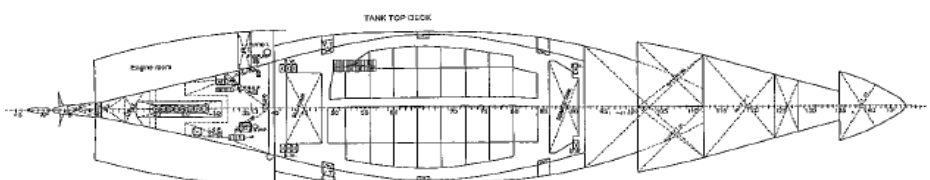
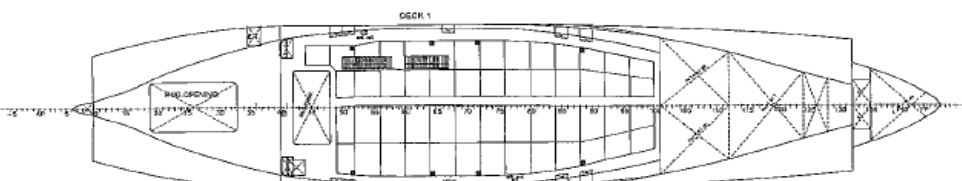
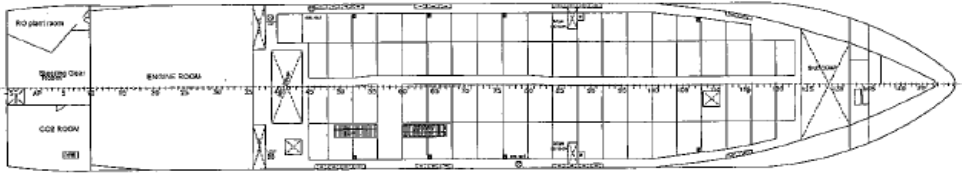
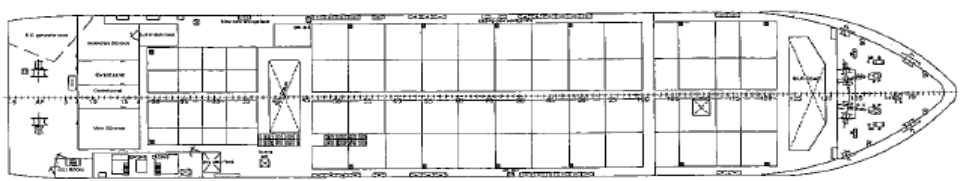
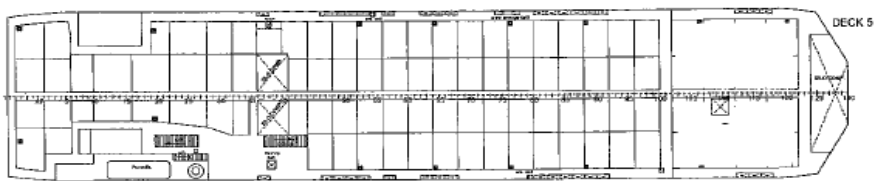
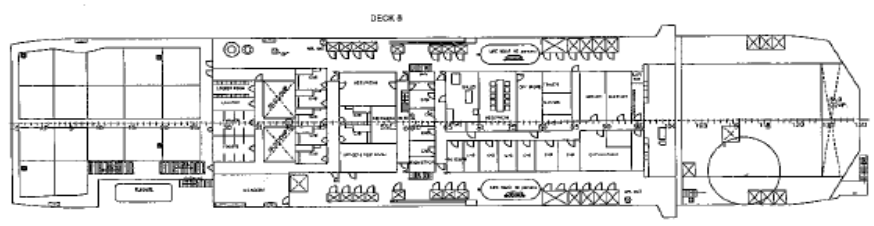
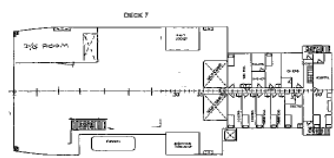
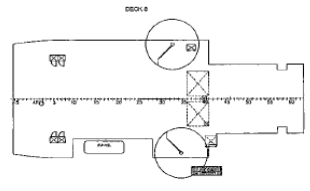
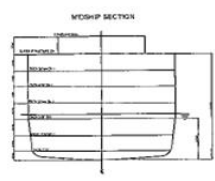
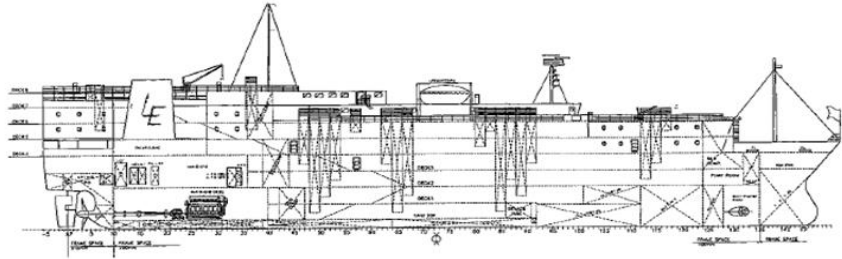
Flag : Luxembourg Port of registry : Luxembourg Built : 1991 IMO N° : 9004413 Class : Rina Builder : Kitanihon Zosen K.K. - Hachinohe	Dimensions		
	LOA	: 108.50 m	
	LBP	: 100.00 m	
	Beam	: 20.02 m	
	Summer draft	: 6.64 m	
	Depth	: 10.70 m	
Machinery		Tonnages	
Main Engine	: Akasaka Diesel Ltd 8UEC45LA, 7,061 kW @ 158 rpm	DWT	3,873 mt
Aux Engines	: 2 x Yanmar M200L-UN, 400 kW + : 2 x Yanmar GN21 AL-SV, 1000 kVA + : CAT 3508B, 1075 kVA	Gross / Net Tonnage	7,896 / 3,329
		Scantling draft	6.64 m
Remarks		Speed	
Gear	: 2 x 2 mt @ 12 m	Service speed	abt 17.0 knots
Capacities / Distribution			
Total Gross Pen area:	4,302 m ²	IFO	609 m ³
Number of decks:	7	MGO	91 m ³
Deck space fodder:	400 m ² (Deck 5: 198m ² - Deck 7:202 m ²)		
Fodder (silo):	1,015 m ³		
Fresh water:	1,490 m ³		
Fresh water production:	2 x 40 m ³ per day		

GENERAL ARRANGEMENT

M/V HOLSTEIN EXPRESS

SCALE 1:200

PRINCIPAL PARTICULARS	
LENGTH (O.A.)	109.5M
LENGTH (B.P.)	100M
BREADTH (MOULDED)	20.1M
DEPTH (MOULDED) (DECK-4)	10.7M
SUMMER DRAFT	6.54M
GROSS TONNAGE	
NET TONNAGE	
MAIN ENGINE (DIESEL)	5,600PX156 RPM
NO. OF PERSONS ON BOARD	1 SET
	35



DESIGNED BY	DATE	SCALE	NO. OF SHEETS
CHECKED BY	DATE	SCALE	NO. OF SHEETS
APPROVED BY	DATE	SCALE	NO. OF SHEETS