



Leaders in Safety



Livestock Express * E chartering@livestock-express.com * W www.livestock-express.com

Livestock Vessel Holstein Express

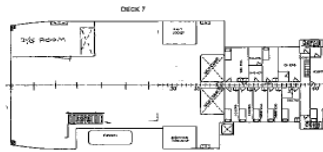
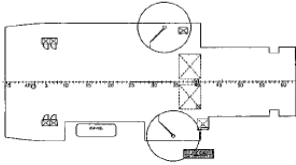
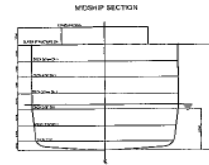
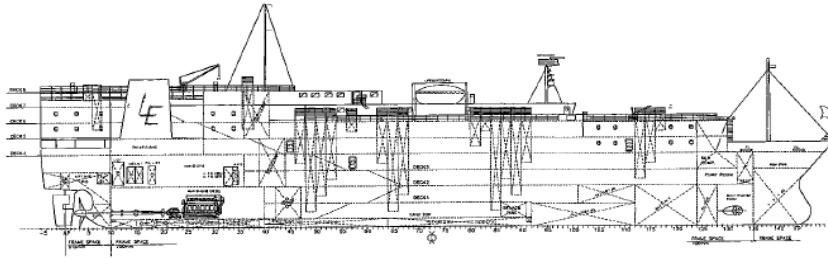
Flag : Luxembourg Port of registry : Luxembourg Built : 1991 IMO N° : 9004413 Class : Rina Builder : Kitanihon Zosen K.K. - Hachinohe		Dimensions	
		LOA	: 108.50 m
		LBP	: 100.00 m
		Beam	: 20.02 m
		Summer draft	: 6.64 m
		Depth	: 10.70 m
Machinery		Tonnages	
Main Engine	: Akasaka Diesel Ltd 8UEC45LA, 7,061 kW @ 158 rpm	DWT	3,873 mt
Aux Engines	: 2 x Yanmar M200L-UN, 400 kW + : 2 x Yanmar GN21 AL-SV, 1000 kVA + : CAT 3508B, 1075 kVA	Gross / Net Tonnage	7,896 / 3,329
		Scantling draft	6.64 m
Remarks		Speed / Consumption	
Gear	: 2 x 2 mt @ 12 m	Laden:	17.0 knots @ 24.0 mt/day IFO - @ 1.5 mt/day MGO
		Ballast:	17.0 knots @ 20.0 mt/day IFO - @ 1.5 mt/day MGO
		Port:	1.0 mt/day MGO
Capacities / Distribution			
Total Gross Pen area:	4,302 m ²	IFO	609 m ³
Number of decks:	7	MGO	91 m ³
Deck space fodder:	400 m ² (Deck 5: 198m ² - Deck 7:202 m ²)		
Fodder (silo):	1,015 m ³		
Fresh water:	1,490 m ³		
Fresh water production:	2 x 40 m ³ per day		

GENERAL ARRANGEMENT

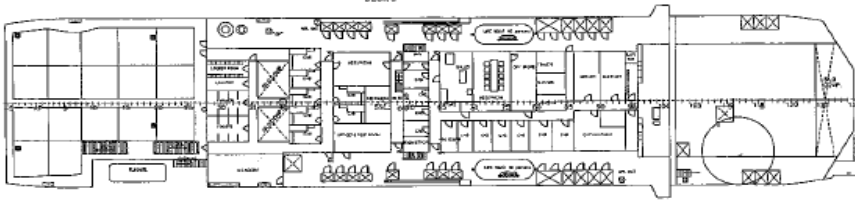
M/V HOLSTEIN EXPRESS
SCALE 1:200

PRINCIPAL PARTICULARS

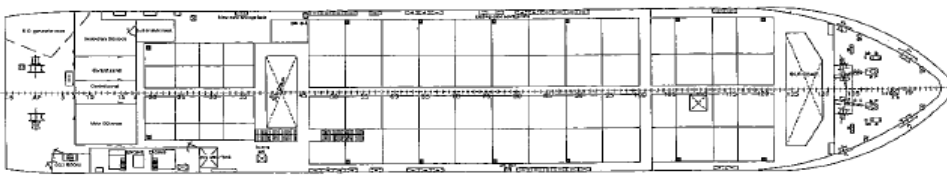
LENGTH (O.A.)	108.5 M
LENGTH (B.P.)	100 M
BREADTH (MOULDED)	20 M
DEPTH (MOULDED) (DECK 4)	10.7 M
SUMMER DRAFT	6.94 M
GROSS TONNAGE	
NET TONNAGE	
MAIN ENGINE (DIESEL)	1 SET
NO. OF PERSONS ON BOARD	30
TOTAL NET CARGO AREA	6219 SQM



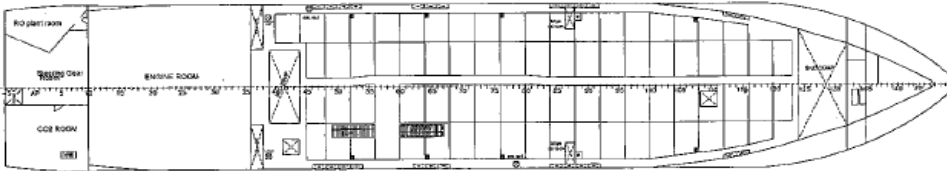
DECK 8



DECK 5



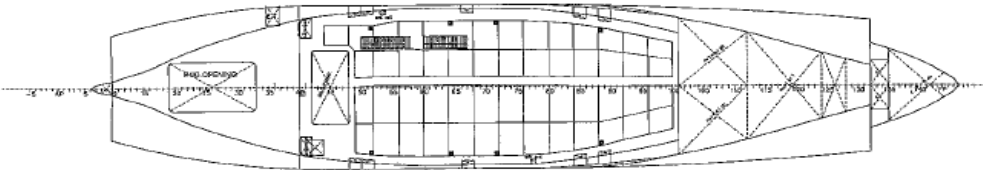
DECK 4



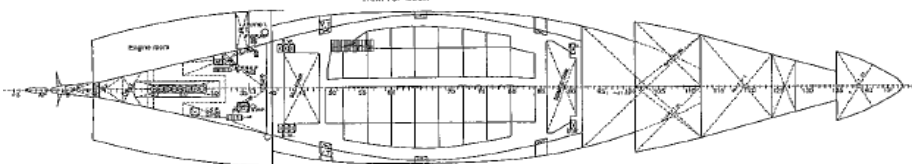
DECK 2



DECK 1



TANK TOP DECK



DESIGNED BY	SCALE	DATE	NO.
CHECKED BY	1:200	15.03.2011	11
APPROVED BY			
M/V HOLSTEIN EXPRESS		GENERAL ARRANGEMENT	