



Livestock Express * E chartering@livestock-express.com * W www.livestock-express.com

Livestock Vessel Holstein Express

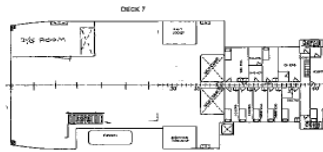
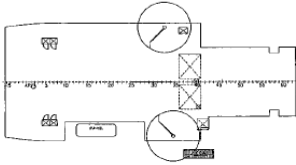
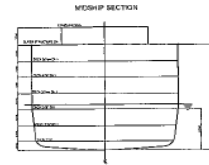
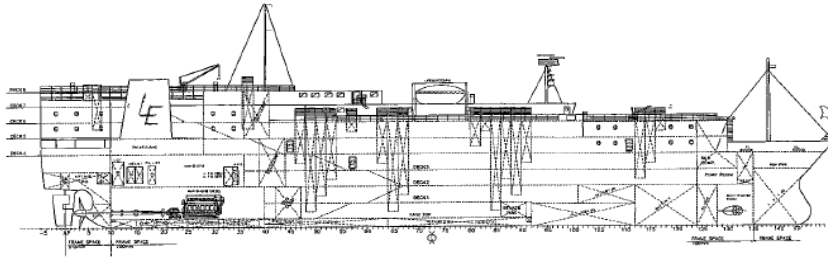
Flag : Luxembourg Port of registry : Luxembourg Built : 1991 IMO N° : 9004413 Class : Rina Builder : Kitanihon Zosen K.K. - Hachinohe	Dimensions
	LOA : 108.50 m LBP : 100.00 m Beam : 20.02 m Summer draft : 6.64 m Depth : 10.70 m
Machinery	Tonnages
Main Engine : Akasaka Diesel Ltd 8UEC45LA, 7,061 kW @ 158 rpm Aux Engines : 2 x Yanmar M200L-UN, 400 kW + : 2 x Yanmar GN21 AL-SV, 1000 kVA + : CAT 3508B, 1075 kVA	DWT : 3,873 mt Gross / Net Tonnage : 7,896 / 3,329 Scantling draft : 6.64 m
Remarks	Speed / Consumption
Gear : 2 x 2 mt @ 12 m	Laden: 17.0 knots @ 24.0 mt/day IFO - @ 1.5 mt/day MGO Ballast: 17.0 knots @ 20.0 mt/day IFO - @ 1.5 mt/day MGO Port: 1.0 mt/day MGO
Capacities / Distribution	
Total Gross Pen area: 4,314 m ² Total Gross Sheep Pen area (only deck 4 & 5): 1,833 m ² Number of decks: 7 Deck space fodder: 400 m ² (Deck 5: 198m ² - Deck 7:202 m ²) Fodder (silo): 1,009 m ³ Fresh water: 1,607 m ³ Fresh water production: 2 x 40 m ³ per day	IFO : 609 m ³ MGO : 91 m ³

GENERAL ARRANGEMENT

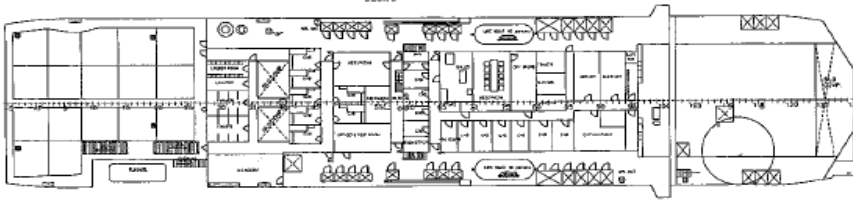
M/V HOLSTEIN EXPRESS
SCALE 1:200

PRINCIPAL PARTICULARS

LENGTH (O.A.)	108.5 M
LENGTH (B.P.)	100 M
BREADTH (MOULDED)	20 M
DEPTH (MOULDED) (DECK 4)	10.7 M
SUMMER DRAFT	6.94 M
GROSS TONNAGE	
NET TONNAGE	
MAIN ENGINE (DIESEL)	1 SET
NO. OF PERSONS ON BOARD	30
TOTAL NET CARGO AREA	6219 SQM



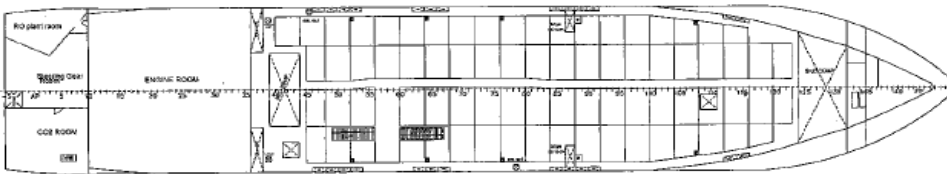
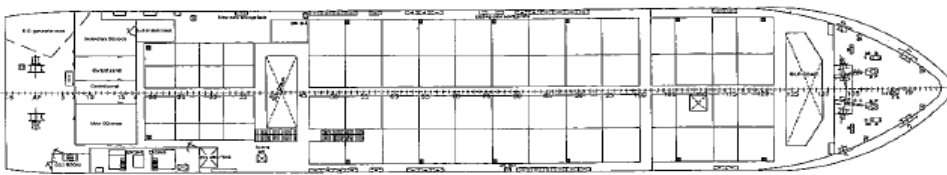
DECK 8



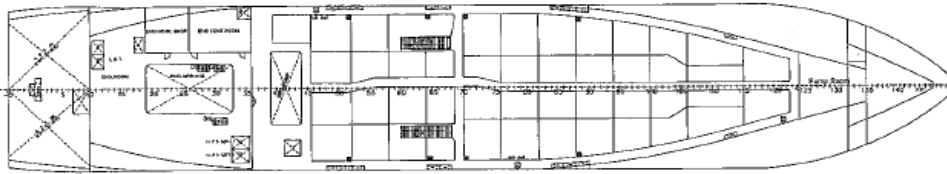
DECK 5



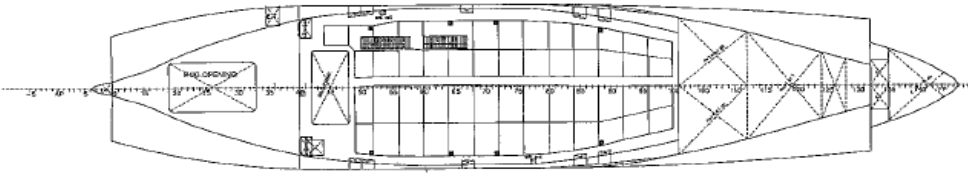
DECK 4



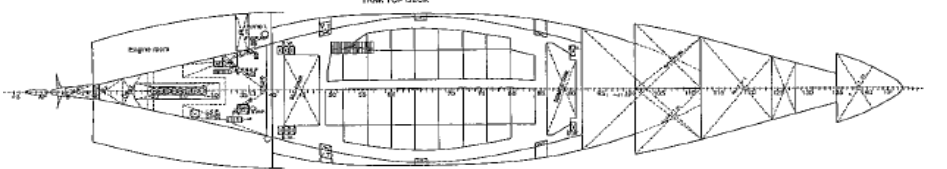
DECK 2



DECK 1



TANK TOP DECK



DESIGNED BY	SCALE	DATE
CHECKED BY	1:200	15.03.2011
APPROVED BY		