



## GREYMAN EXPRESS Livestock Carrier

Vessel number 2018

### GENERAL

Year built	2016
Builder	Cosco Guangdong, China
Flag	Portugal
IMO	9733777
Class notations (RINA)	Livestock carrier; unrestricted navigation; AUT-UMS; COMF-NOISE-B; COMF-VIB-B; GREEN STAR 3 DESIGN; INWATERSURVEY; MON-SHAFT

### PRINCIPAL DIMENSIONS

Length overall (LOA)	134.80 m
Beam moulded	19.60 m
Depth	14.80 m
Summer draft	6.80 m

### MACHINERY & PROPULSION

Main engine	6,090 kW Wartsila W7X35
- Service speed	abt 16.75 knots
Shaft generator	1,050 kW
Auxiliary engines	3 x 1,100 kW
Second source of power	465 kW
Bow thruster	750 kW

### TONNAGES

Deadweight tonnage (DWT)	5,225 t
Scantling draft	6.80 m
Design draft	5.80 m
Gross tonnage	10,421 t
Nett tonnage	3,126 t

### CARGO CAPACITIES & EQUIPMENT

Total Gross Pen area	4,622 m <sup>2</sup>
Number of decks	5
Deck space fodder	495 m <sup>2</sup>
Fodder (silo)	1,200 m <sup>3</sup>
Fresh water	2,694 m <sup>3</sup>
Fresh water production	2 x 100 m <sup>3</sup> per day
Air circulation	AMSA compliant
Deck cranes	2 deck cranes 3 T /24 m

### BUNKER CAPACITIES

Fuel Oil	1,125 m <sup>3</sup>
Gas Oil	192 m <sup>3</sup>

18-08-2023

This technical specification sheet is subject to change without notice. Whilst every effort has been made to ensure the accuracy of the information presented, no guarantees of accuracy can be given. For enquiries, kindly email us at [chartering@livestock-express.com](mailto:chartering@livestock-express.com).

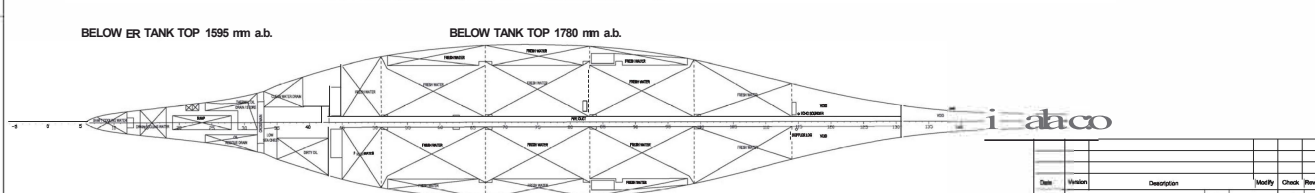
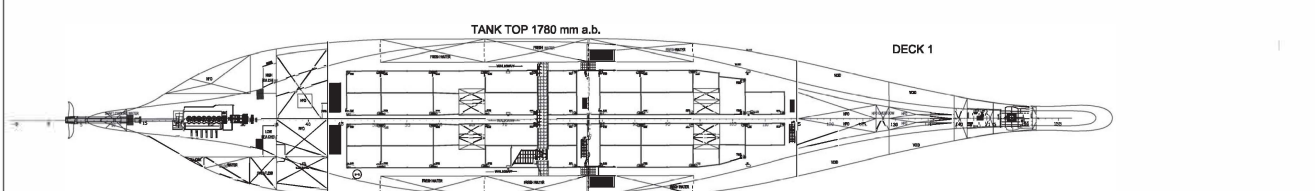
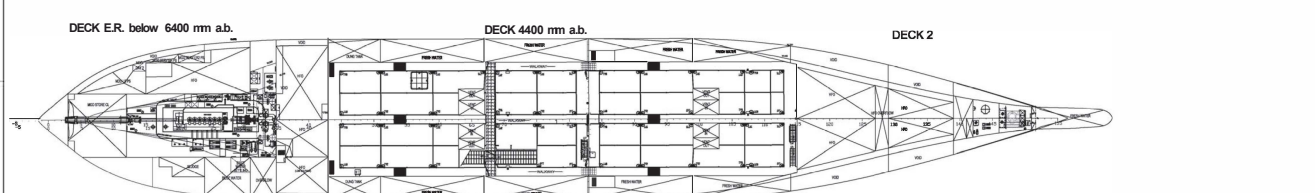
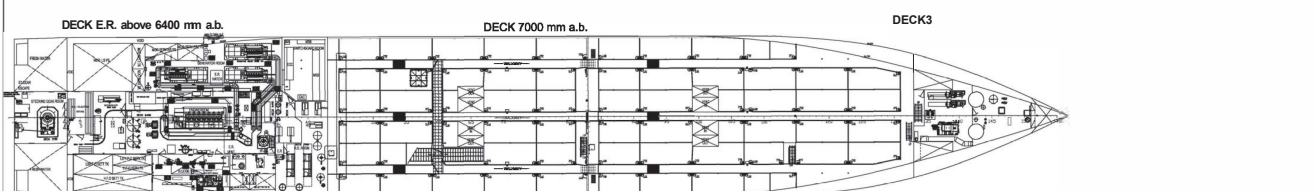
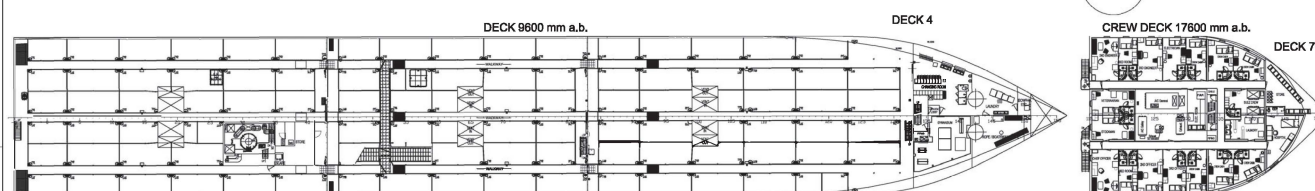
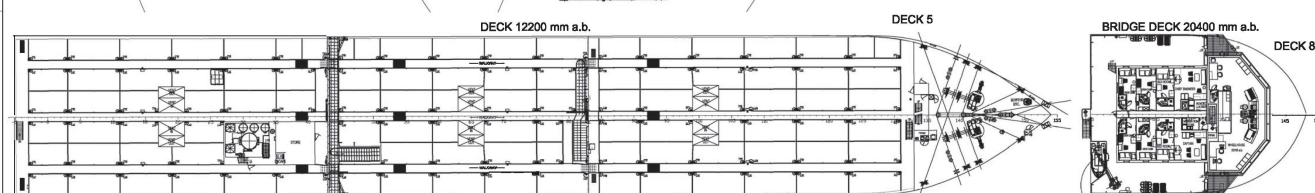
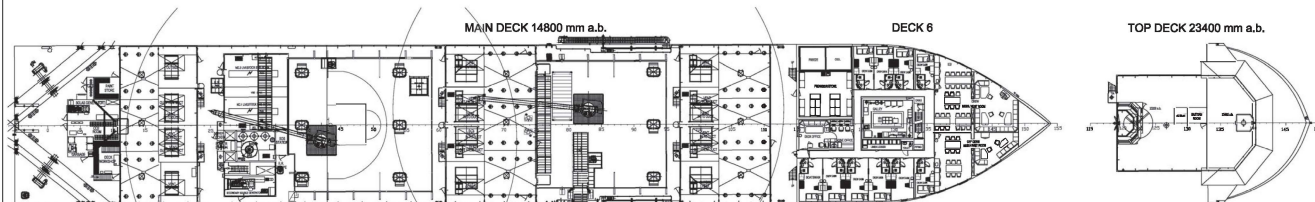
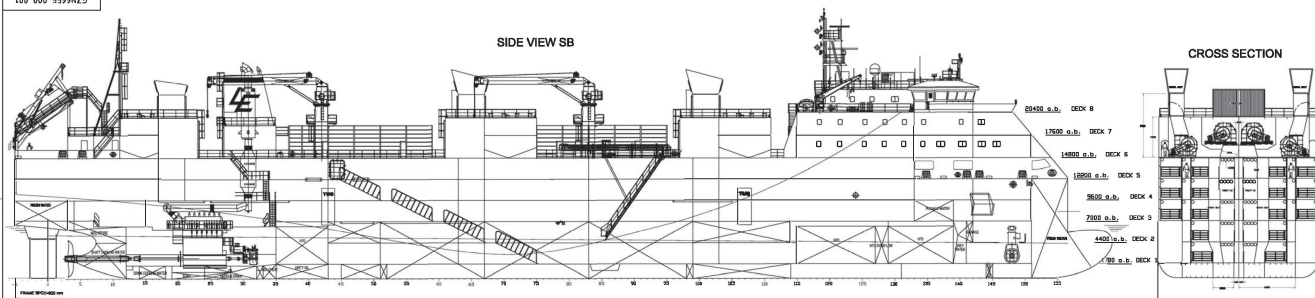


LIVESTOCK EXPRESS

[www.livestock-express.com](http://www.livestock-express.com)  
[chartering@livestock-express.com](mailto:chartering@livestock-express.com)



100-000-559N2D



Date	Version	Description	Modify	Check	Rev
2010-03-01	01	GENERAL ARRANGEMENT PLAN			
2010-03-01	02	GENERAL ARRANGEMENT PLAN			
2010-03-01	03	GENERAL ARRANGEMENT PLAN			
2010-03-01	04	GENERAL ARRANGEMENT PLAN			
2010-03-01	05	GENERAL ARRANGEMENT PLAN			
2010-03-01	06	GENERAL ARRANGEMENT PLAN			
2010-03-01	07	GENERAL ARRANGEMENT PLAN			
2010-03-01	08	GENERAL ARRANGEMENT PLAN			
2010-03-01	09	GENERAL ARRANGEMENT PLAN			
2010-03-01	10	GENERAL ARRANGEMENT PLAN			
2010-03-01	11	GENERAL ARRANGEMENT PLAN			
2010-03-01	12	GENERAL ARRANGEMENT PLAN			
2010-03-01	13	GENERAL ARRANGEMENT PLAN			
2010-03-01	14	GENERAL ARRANGEMENT PLAN			
2010-03-01	15	GENERAL ARRANGEMENT PLAN			
2010-03-01	16	GENERAL ARRANGEMENT PLAN			
2010-03-01	17	GENERAL ARRANGEMENT PLAN			
2010-03-01	18	GENERAL ARRANGEMENT PLAN			
2010-03-01	19	GENERAL ARRANGEMENT PLAN			
2010-03-01	20	GENERAL ARRANGEMENT PLAN			