

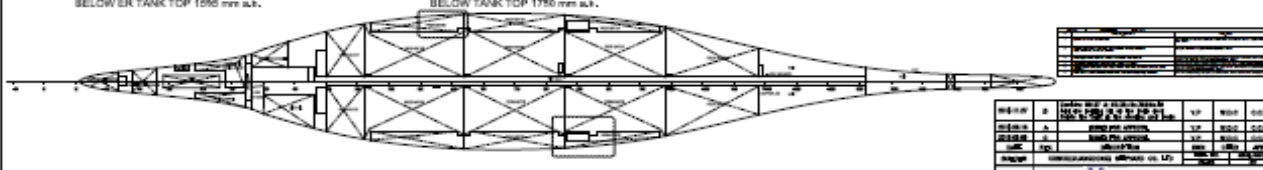
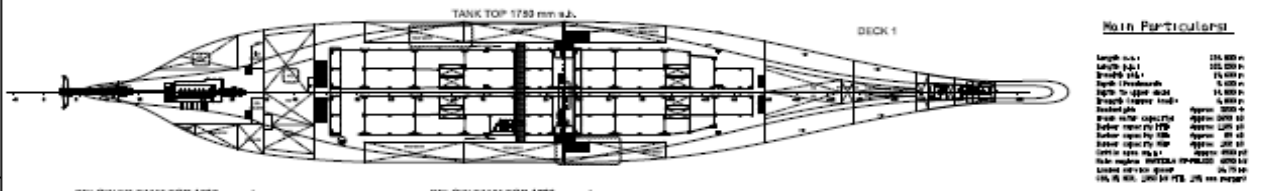
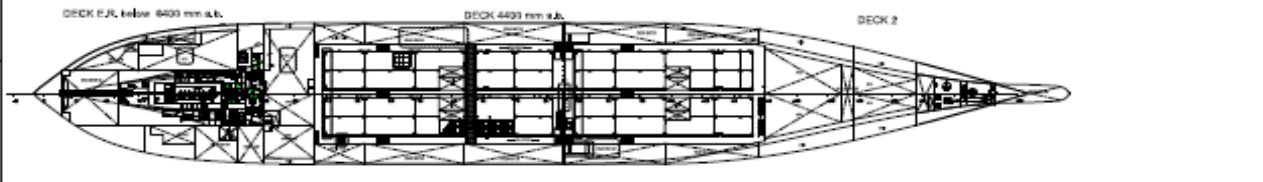
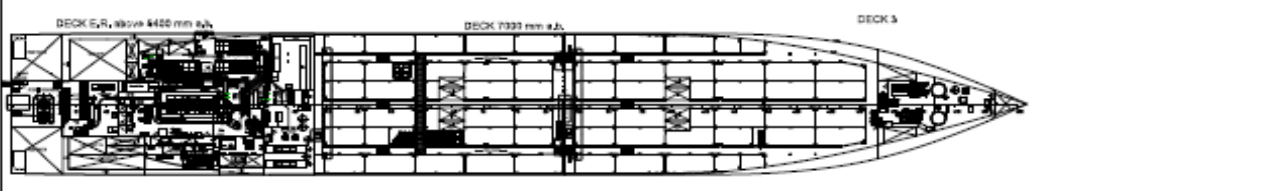
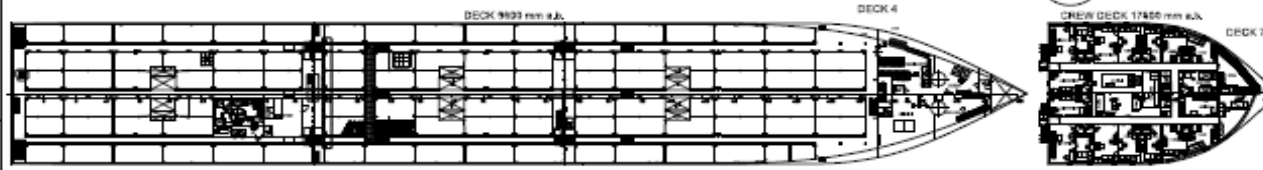
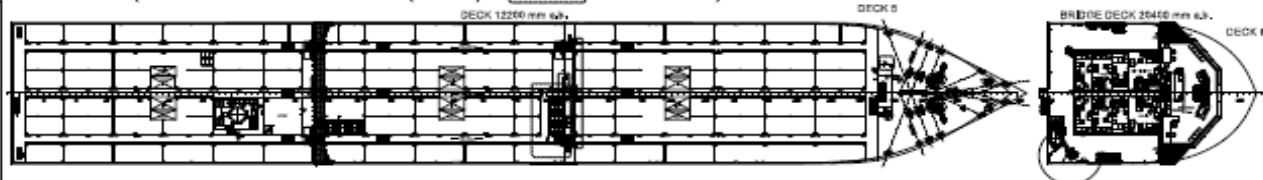
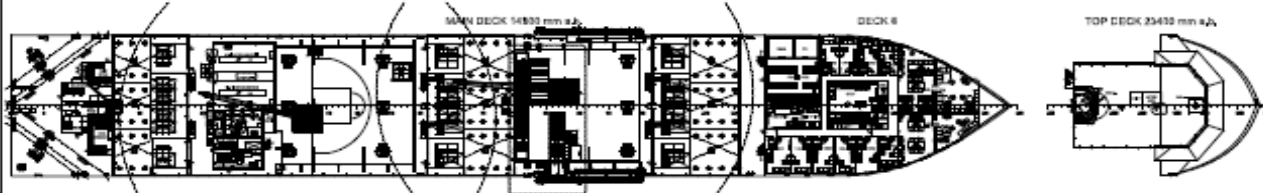
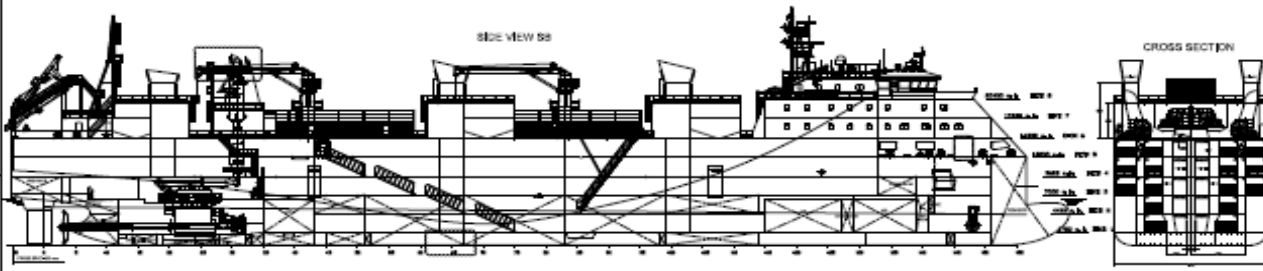


Livestock Express * E chartering@livestock-express.com * W www.livestock-express.com

Livestock Vessel Gloucester Express

Flag : Singapore Port of Registry : Singapore Built : 2016 IMO N° : 9733765 Class : Rina Builder : China Cosco, Guangdong Class notation : C Ⓢ livestock carrier; unrestricted navigation Ⓢ AUT-UMS; COMF-NOISE-B; COMF-VIB-B; GREEN STAR 3 DESIGN; INWATERSURVEY; MON-SHAFT	Dimensions
	LOA : 134.80 m Length between pp : 125.25 m Beam moulded : 19.60 m Depth : 14.80 m Summer draft : 6.80 m
Machinery	Tonnages
Main Engine : 6,090 kW Wartsila W7X35 Shaft generator : 1,050 kW Aux Engines : 3 x 1,100 kW 2nd source of power : 465 kW Bow Thruster : 750 kW	DWT : 5,200 T Scantling draft : 6.80 m Design draft : 6.80 m Gross Tonnage : 10,421 Net Tonnage : 3,126
Remarks	Speed
Gear : 2 x 3 T deck cranes @ 24 m Air circulation: 90 air changes per hour (200 PAT)	Service speed: abt 16.75 knots (shaft generator engaged)
Capacities	
Total Gross Pen area: 4,626 m ² Number of decks: 5 Deck space fodder: 495 m ² Fodder (silo): 1,200 m ³ Fresh water: 2,694 m ³ Fresh water production: 2 x 100 m ³ per day	HFO 1,125 m ³ MGO 102 m ³ MDO 90 m ³

Livestock Express * E chartering@livestock-express.com * W www.livestock-express.com



Main Particulars

Length o.a.	100.00 m
Length p.p.	100.00 m
Beam o.a.	24.00 m
Beam inboard	24.00 m
Depth to upper deck	14.000 m
Depth to lower deck	6.000 m
Draught to	
max. depth	approx. 2000 mm
before repair of 170	approx. 1200 mm
before repair of 150	approx. 80 mm
before repair of 140	approx. 200 mm
100 to 100 mm	approx. 800 mm
100 to 100 mm	approx. 100 mm
100 to 100 mm	approx. 100 mm
100 to 100 mm	approx. 100 mm
100 to 100 mm	approx. 100 mm

No.	Description	Unit	Quantity

Item	Material	Unit	Quantity

VIICON B.V.			
General Building Office			
GENERAL AFFIDAVIT PLAN			
This plan was prepared by me or under my supervision and to the best of my knowledge and belief it conforms to the requirements of the Act of 1980 (S. 171 of the Dutch Civil Code of 1911) and the Royal Decree of 1981 (S. 171 of the Dutch Civil Code of 1911).			
Signature: _____ Date: _____			