

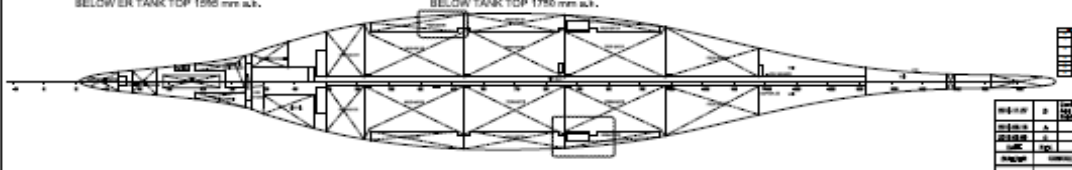
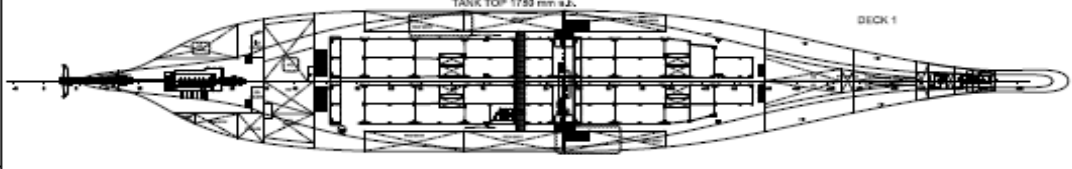
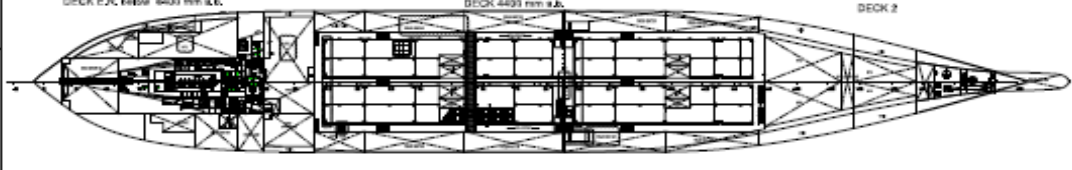
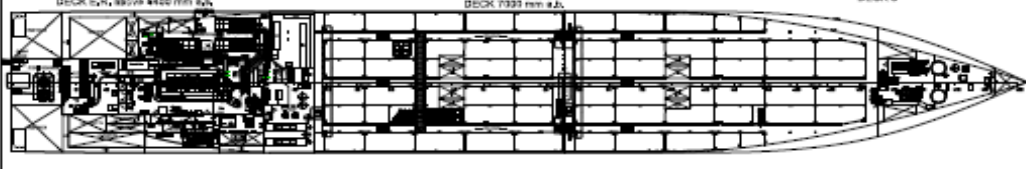
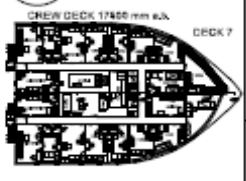
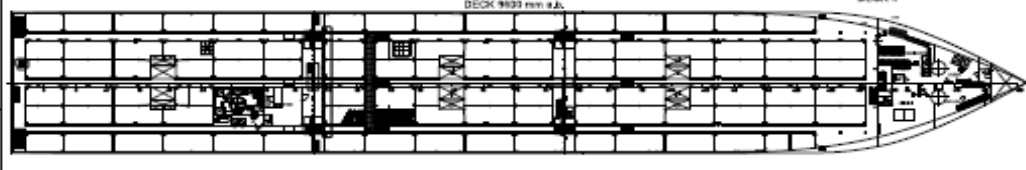
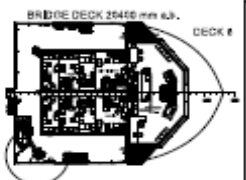
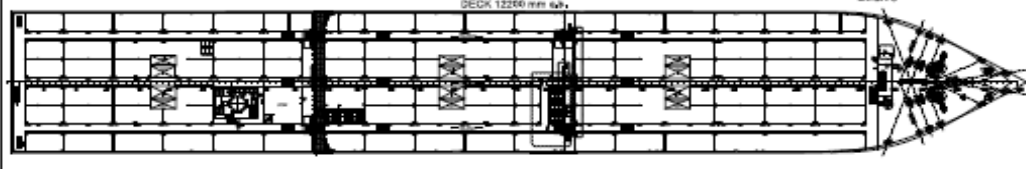
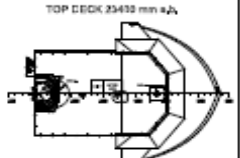
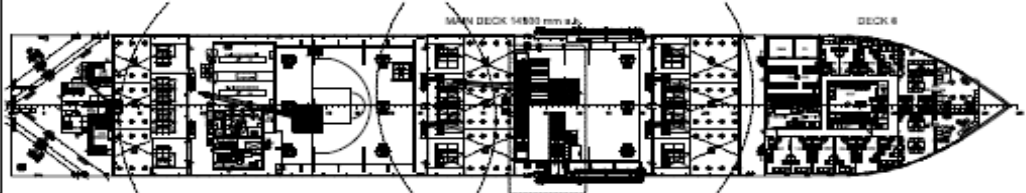
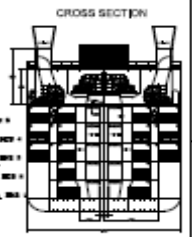
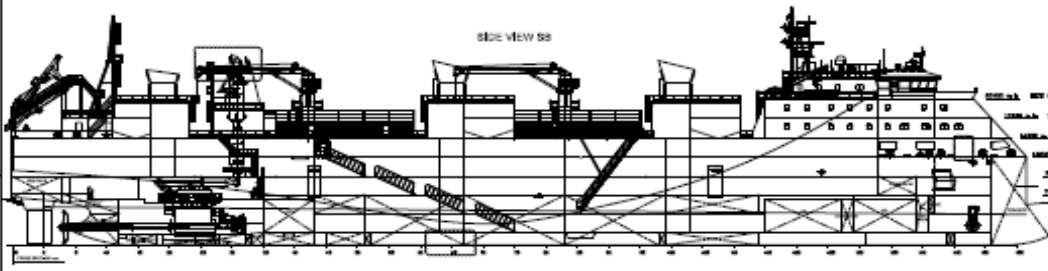


Livestock Express * E chartering@livestock-express.com * W www.livestock-express.com

Livestock Vessel Gloucester Express

Flag : Singapore Port of Registry : Singapore Built : 2016 IMO N° : 9733765 Class : Rina Builder : China Cosco, Guangdong Class notation : I Ⓜ Hull Ⓜ Mach, Livestock Carrier, Unrestricted Navigation, Ⓜ Aut-UMS, InWaterSurvey, Cleanship NDO 7-days, MON-Shaft, COMF-NOISE 2, COMF-VIB 2, green passport, OWS-5ppm	Dimensions LOA : 134.80 m Length between pp : 125.25 m Beam moulded : 19.60 m Depth : 14.80 m Summer draft : 6.80 m
Machinery Main Engine : 6,090 kW Wartsila W7X35 Shaft generator : 1,050 kW Aux Engines : 3 x 1,100 kW 2nd source of power : 465 kW Bow Thruster : 750 kW	Tonnages DWT : 5,200 T Scantling draft : 6.80 m Design draft : 6.80 m Gross Tonnage : 10,421 Net Tonnage : 3,126
Remarks Gear : 2 x 3 T deck cranes @ 24 m Air circulation: 90 air changes per hour (200 PAT)	Speed / Consumption Max sea speed: 18 knots Service speed: abt 16.75 knots (shaft generator engaged)
Capacities	
Total Gross Pen area: 4,626 m ² Number of decks: 5 Deck space fodder: 495 m ² Fodder (silo): 1,200 m ³ Fresh water: 2,694 m ³ Fresh water production: 2 x 100 m ³ per day	HFO 1,125 m ³ MGO 102 m ³ MDO 90 m ³

Livestock Express * E chartering@livestock-express.com * W www.livestock-express.com



Main Particulars

Length o.a.	135,000 m
Length p.p.l.	122,000 m
Beam o.a.	19,000 m
Depth (to main deck)	5,000 m
Depth to upper deck	14,000 m
Depth (to main deck)	5,000 m
Keel depth	approx. 3000 m
Free hold capacity	approx. 2000 m
Below main deck	approx. 1200 m
Below upper deck	approx. 80 m
Below lower deck	approx. 200 m
Deck area	approx. 2000 m ²
Deck volume	approx. 10000 m ³
Deck height	approx. 10 m
Deck width	approx. 10 m
Deck length	approx. 10 m

NO.	1	DESCRIPTION	UNIT	VALUE	REMARKS
NO.	2	DESCRIPTION	UNIT	VALUE	REMARKS
NO.	3	DESCRIPTION	UNIT	VALUE	REMARKS
NO.	4	DESCRIPTION	UNIT	VALUE	REMARKS
NO.	5	DESCRIPTION	UNIT	VALUE	REMARKS
NO.	6	DESCRIPTION	UNIT	VALUE	REMARKS
NO.	7	DESCRIPTION	UNIT	VALUE	REMARKS
NO.	8	DESCRIPTION	UNIT	VALUE	REMARKS
NO.	9	DESCRIPTION	UNIT	VALUE	REMARKS
NO.	10	DESCRIPTION	UNIT	VALUE	REMARKS
NO.	11	DESCRIPTION	UNIT	VALUE	REMARKS
NO.	12	DESCRIPTION	UNIT	VALUE	REMARKS
NO.	13	DESCRIPTION	UNIT	VALUE	REMARKS
NO.	14	DESCRIPTION	UNIT	VALUE	REMARKS
NO.	15	DESCRIPTION	UNIT	VALUE	REMARKS
NO.	16	DESCRIPTION	UNIT	VALUE	REMARKS
NO.	17	DESCRIPTION	UNIT	VALUE	REMARKS
NO.	18	DESCRIPTION	UNIT	VALUE	REMARKS
NO.	19	DESCRIPTION	UNIT	VALUE	REMARKS
NO.	20	DESCRIPTION	UNIT	VALUE	REMARKS